



Always for you,

TS THE KOREA TRANSPORTATION
SAFETY AUTHORITY IS BY YOUR
SIDE ANYTIME, ANYWHERE.

TS Korea Transportation
Safety Authority

Main Phone Number +82-1577-0990

17, Hyeoksin 6-ro, Gimcheon-si, Gyeongsangbuk-do (39660)

www.kotsa.or.kr

TS SNS CHANNEL

 blog.naver.com/autolog

 post.naver.com/autolog

 facebook.com/kotsa.or.kr

 youtube.com/@TS_KOTSA

 instagram.com/kotsa_kr

ALWAYS FOR YOU

The Korea Transportation Safety Authority is by your side anytime, anywhere.

The Korea Transportation Safety Authority thinks of the citizens before anyone else in every aspect of citizens' lives, cares about the citizens before anyone else, and dreams of the citizens' happiness before anyone else.



The Korea Transportation Safety Authority is a reliable partner responsible for the safety of the people and Korea's transportation culture that dreams of a happier tomorrow than today and works on completing a new paradigm of traffic safety.

Contents

04 CEO MESSAGE

06 ALWAYS TS

08 TS History

10 TS Core Value

12 TS Roadmap

14 TS Focal Projects

18 FOR TRAFFIC SAFETY

20 I . Traffic Safety Management

26 II . Car Safety Management

34 III . Rail·Air Traffic Safety Management

40 YOUR HAPPINESS

42 Social Contribution

44 Ethical Management and
Human Rights Management

46 About Korea Transportation Safety
Authority

CEO MESSAGE



Citizen happiness, that is the sole reason behind the existence of the Korea Transportation Safety Authority.

Although the rate of fatal traffic accidents in South Korea has gradually been decreasing since 2012, it has only reached the average of OECD member countries in 2021. In fact, the number of pedestrian deaths due to traffic accidents is ranked among the lowest of OECD member countries.

A society that does not protect the lives of its citizens cannot guarantee happiness. A society can only guarantee happiness when it “puts people first.”

The Korea Transportation Safety Authority will continue to strive and focus all its competencies on protecting the lives and safety of citizens from traffic accidents in all areas, including roads, railroads and flights. Moreover, we will endeavor to secure the standard of transportation safety commensurate with its ranking as one of the world’s top 10 economic scale based on high sense of responsibility and professionalism for the safety of citizens.

As such, customized traffic accident prevention activities using cutting-edge ICT will be given top priority, and we will do our best to secure the safety of vehicles through researching automotive vehicle inspection technology for future vehicles, such as electric and hydrogen vehicles, as well as thorough safety evaluation and defect inspection.

Additionally, we will establish and enhance the K-City project for experimenting with autonomous vehicles in preparation for the age of autonomous driving. We are currently preparing and supporting safe technology development as well as system for level 3 autonomous driving vehicles and higher. We will also prepare for future traffic safety by establishing a comprehensive drone safety management system starting with pilot qualification management and aircraft registration to create a safe drone operation environment.

Last but not least, we will grow into a sustainable organization by realizing social values through coexistence of local communities and become an institution that is “with the people,” always listening to the diverse opinions of the public.

Thank you.

Kwon Yong-bok, President of the Korea Transportation Safety Authority

권용복

08

TS HISTORY

10

TS CORE VALUE

12

TS ROADMAP

14

TS FOCAL PROJECTS



**ALWAYS
TS**

About TS

The Korea Transportation Safety Authority is creating a happy future without traffic accidents to protect the citizens' precious dreams.

The Korea Transportation Safety Authority considers the happiness of the people as the highest value, and has continued to change and innovate every year. In order to protect the precious dreams and safety of each and every citizen for a long time, the Korea Transportation Safety Authority is creating new values by creating a traffic safety culture in every corner of our lives.

TS HISTORY

The Korea Transportation Safety Authority has been laying the groundwork for traffic safety in Korea, thinking about the safety of the people. We dream of a new future of traffic safety by contributing to national economic development and promotion of public welfare through traffic safety.



Before 2000s

Dec. 28, 1979	Enacted and promulgated Transportation Safety Promotion Authority Act (Law No. 3185)
Jul. 1, 1981	Established the Transportation Safety Promotion Authority
May 15, 1987	Established the Automobile Testing and Research Institute
Nov. 26, 1993	Completed the first stage construction work of the Automobile Testing and Research Institute
Apr. 5, 1995	Changed the Authority name to Transportation Safety Authority

2000s

Jan. 1, 2000	Commenced with the support work for car accident victims
Apr. 12, 2002	Commenced with the investigation on automobile defects
May 20	Carried out detailed inspection of driver's exhaust gas
Jan. 1, 2003	Commenced with the approval work for the structural change of two-wheeled vehicles
May 7	Completed with the construction of proving ground
Jan. 26, 2004	Commenced the qualification test for the ULV pilot and the certification and inspection work for safety
Jul. 1	Commenced the qualification test for the drivers of freight transportation, education and certification
Mar. 16, 2006	Commenced with the work of Railway Safety Inspection
Mar. 2, 2009	Opened the Research and Education Center for a Safe Driving Experience
Mar. 30	Introduced the General Vehicle Inspection System

2010s

Nov. 25, 2011	Commenced with the re-inspection work of pressure-resistant containers in CNG vehicles
Aug. 1, 2012	Commenced with the qualification test and issuance of a certificate for bus drivers
Dec. 3, 2013	Completed the construction of a high-tech test driving road
Mar. 19, 2014	Implemented the review of the Railway Total Test Operation results Implemented the approval inspection of the Railway Safety Management System
Sep. 25, 2015	Signed an outsourcing contract to inspect day beacons such as aviation obstacle lights and warning lights
Mar. 2, 2017	Opened the Transportation Safety Training Center in Hwaseong
Apr. 6	Opened the Gimje Specialized Vehicle Certification Center
Jan. 1, 2018	Promulgated the Korea Transportation Safety Authority Act Changed the organization's name to the Korea Transportation Safety Authority
Nov. 19	Operated the Hazardous Material Transport Safety Management Center
Dec. 10	Completed the construction of self-driving car test bed (K-City)
Jan. 1, 2019	Operated the Korea Automobile Testing & Research Institute as an affiliated institution

2020s

Aug. 7, 2020	Implemented safety and convenience level evaluation of railway stations
Sep. 9	Opened the Drone Qualification Research Center in Hwaseong
Oct. 5	Opened the Vehicle Inspection Station in Dongtan
Nov. 2	Opened the Drone Education and Training Center in Siheung
Nov. 18	Opened Korea Advanced Vehicle Inspection R&D Center (KAVIC)
Jan. 1, 2021	Initiated taxi driver qualification test operations
Jun. 29	Opened the Gangwon and Chuncheon Branch of Vehicle Inspection Office
Jul. 1	40th anniversary of the Korea Transportation Safety Authority
Feb. 22, 2022	Established the battery testing building at an eco-friendly vehicle parts center
May. 26	Commenced construction for a performance and safety testing center for tuned cars
Dec. 8	Registered as a drone service provider and initiated safety management operations
Jul. 1, 2023	Opened the Ulsan Hydrogen Vehicle Inspection Center

TS CORE VALUE

The Korea Transportation Safety Authority is leading Korea's traffic safety culture based on the best talents, creative challenges, trust and cooperation in various areas of traffic safety to create a sustainable traffic safety society.

PURPOSE OF ESTABLISHMENT

Our purpose is to implement projects that will prevent any traffic accidents from occurring and contribute to the efficiency of transportation safety management and to protect the lives, bodies and properties of the people. (Article 1 of the Korea Transportation Safety Authority Act)

MISSION

We pursue an efficiency of national transportation management and create a Safe Environment to make the World happier

VISION

We open the Safe and Sustainable Future Mobility Era

CORE VALUES

Safety first

Innovation

Co-prosperity

Transparency

2027 BUSINESS GOALS

Global top 10 in traffic safety

Leader in providing support for innovation and growth in the private sector

First commercialization of autonomous vehicles and UAM

The most trusted institution by the public

STRATEGY OBJECTIVES

Fostering a traffic environment focused on accident prevention for all

Delivering future mobility innovation that enhances the value of transportation

Upholding social responsibility through strengthened support for and collaboration with the private sector

Taking a leap as a preeminent public institution trusted by the public



TS ROADMAP

The Korea Transportation Safety Authority is building a value chain to maximize the value of each business field and is carrying out various traffic safety projects to protect people's lives and property in all areas of transportation, including roads, railroads, and aviation.



Road Traffic Safety Management

Traffic Safety Management of Transportation Company / Transportation Worker Qualification Test, Detailed Driving Aptitude Test / Public Transportation Status Survey and Evaluation / Traffic Safety Research, Education and Promotion



Vehicle Inspection

Vehicle Total Regular Inspection / Vehicle Tuning (Structural Change) Approval and Inspection / Advanced Vehicle Inspection & Research / CNG High-Pressure Container Inspection, Mechanical Parking Lot Inspection, Equipment Accuracy and Performance Testing, Ropeway Inspection



Rail Traffic Safety Management

Regular and Periodic Inspection for Rail Safety / Railway Worker Qualification Test / Comprehensive Management of Rail Safety Information / Rail Facilities Safety Diagnosis and Result Evaluation

Air Traffic Safety Management

Aviation Safety Research and Voluntary Report System / Aviation and Ultra-light Vehicle (ULV) Controller Qualification Test / Infrastructure Construction for Drone Safety / ULV Safety Management



Test & Research on Vehicle Safety

Vehicle Safety Evaluation / Investigation and Return Policy for Manufacturing Defects / Exchange & Refund System / Research for Automated Vehicle Technology and K-City Operation / Research for Future Vehicle and Funding for Related Industries



Traffic Information Service

Operation of the Transportation Advice on Going Anywhere (TAGO) / Vehicle Management Information System / Digital Tachograph Analysis System (eTAS) / Real-time Safe School Bus Service / Taxi Operation Information Management System (TIMS)



Experience-oriented Safe Driving Education

Experience-oriented Safe Driving Education for Transportation Workers / Operation of Private Taxi Transfer and Acquisition Training Course / Eco-drive Education / Operation of Bus Driver Qualification Course



Support for Traffic Accident Victims and Their Families

Support for Traffic Accident Victims and Their Families



TS

FOCAL PROJECTS

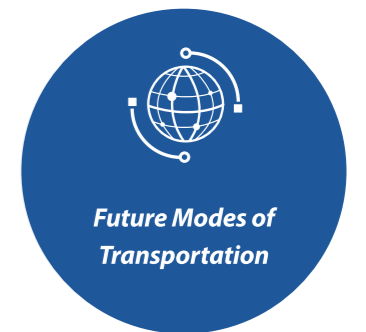
The Korea Transportation Safety Authority leads the transportation safety paradigm through constant innovation and challenges to bring us toward a new future. We are cultivating new projects in digital innovation-based future transport and employing model ESG management to provide the public with a sense of safety while also building a smart future transportation environment to gain a foothold in sustainable development as a socially responsible institution.

NEW FUTURE TRANSPORTATION PROJECTS DRIVEN BY DIGITAL INNOVATION

The Korea Transportation Safety Authority is establishing strategies and evaluating management to keep pace with the paradigm of Industry 4.0 and actively promoting new projects in anticipation of responses to changes in the transportation industry of the future.

Future Modes of Transportation

We are actively promoting new projects related to the future of transportation in order to take the reins in leading the world in the fierce sector of future transport. To accomplish this, we are strengthening expert functions in response to the commercialization of future methods of transport such as projects related to flying vehicles in the future air transport sector and hydrogen-powered and electric trams in the sector of future rail.



Urban Air Mobility (UAM)

We are actively responding by improving systems related to establishing organizations dedicated to urban air mobility (UAM) in order to make UAM a reality. In addition, through participation in the public-private consultative group UAM Korea, we are actively cooperating to develop Korean urban air mobility (K-UAM) into a global standard.



Autonomous Vehicle Services

We are supporting early commercialization by boosting the autonomous vehicle industry by creating of an industrial ecosystem to cultivate the future automotive industry. We are currently implementing advancement projects to test Level 4 Autonomy in K-City. We are striving to secure a leading position in future autonomous vehicle technology with the establishment of bodies such as the Connected Vehicle Research Department and the Autonomous Driving Innovation Department to boost autonomous vehicle services and prepare the V2X security certification system.



STRENGTHENED SENSE OF PUBLIC SAFETY

The Korea Transportation Safety Authority is constructing a safety management system utilizing big data analysis to maximize reduction of traffic accidents in order to convey a sense of the changes and development of transportation safety to the public.



Strengthened Mobility Safety Functions

Strengthened Mobility Safety Functions

We have established relevant departments and strengthened their functions in transportation safety management to rapidly respond to the occurrence of traffic accidents and accelerate the provision of mobility services owing to the advent of new modes of transportation, such as personal mobility.



Utilization of Big Data for Transportation Safety

Utilization of Big Data for Transportation Safety

We are building and expanding by utilizing an array of big data related to transportation safety through an integrated safety management platform. Through innovative digital technologies such as AI machine learning, utilization of transportation data analysis predicts and prevents traffic accidents. We continue to expand the areas in which we utilize big data by searching for data businesses to support the Digital New Deal.



Strengthened Task-centered Transportation Safety Services

Strengthened Task-centered Transportation Safety Services

We are building a task platform that utilizes big data on transportation to enable the safe and convenient use of methods of transportation that the public use in their daily lives, such as taxis and buses. Through this, we are improving the safety of these transportation methods and strengthening transportation safety services to allow for convenient use of services desired by the public.

MODEL ESG MANAGEMENT

The Korea Transportation Safety Authority surveys social demands through strategic thinking on sustainability and by employing environmental, social, governance (ESG) management to contribute to balanced local development.



Realization of Social Values

Realization of Social Values

We are expanding our organization with regards to making ESG management a reality based on transparent management strategies in consideration of the environment and society, while also expanding our support for inclusive social values, including safety, environment, and coexistence.



Management Efficiency

Management Efficiency

We are strengthening efficient asset and facility management as well as our capacity for communication with customers through expanded communication with the CEO and executive staff by building a horizontal organizational culture to form a consensus on management efficiency.



Balanced Local Development

Balanced Local Development

We are expanding our employment ratio of local talents and training them through our open campus through the donation of time and talent by employees. We are also making every effort to promote projects aimed at creating positions tailored to the local area. Furthermore, through the promotion of local cooperative projects, such as cultivating young local CEOs and social enterprises, we are growing together with local communities.

20

I. TRAFFIC SAFETY
MANAGEMENT

26

II. CAR SAFETY
MANAGEMENT

34

III. RAIL·AIR TRAFFIC SAFETY
MANAGEMENT



FOR TRAFFIC SAFETY

Major Work

In order to create a tomorrow that is beyond today, the Korea Transportation Safety Authority is working tirelessly toward flawless and perfect traffic safety.

The Korea Transportation Safety Authority is responsible for traffic safety in Korea with its excellent technology and safety management capabilities. In order to make more people enjoy better traffic safety, the Korea Transportation Safety Authority is constantly striving for a safer tomorrow for all citizens.

TRAFFIC SAFETY MANAGEMENT

The beginning of a traffic safety
culture where everyone is happy



- Safety Management of Commercial Vehicles
- Nationwide Transportation Safety Operations

Safety Management of Commercial Vehicles



Transportation Safety Inspection

TS quarterly conducts 'Transportation Safety Inspection' for the bus, taxi and cargo companies caused by traffic accidents above the certain criteria. Inspectors check the companies would comply with the related law and regulations for employment, operation, education, accident process and vehicle management etc.

Transportation Safety Management Regulations

Confirmation and evaluation of 'Transportation Safety Management Regulations' evaluate the implementation of management regulations established for each transportation company, such as the transportation safety management system and the actual status of transportation safety management, every five years.

Transportation Worker Qualification Management

We thoroughly manage the qualifications of transportation workers so that accidents do not occur due to human error. A detailed driving aptitude test is conducted to scientifically evaluate the aptitude defect factors. We conduct qualification maintenance inspections every three years (every year for those over 70) for senior transportation workers aged 65 and over. In addition, to secure the professionalism of drivers, we are operating cargo/bus/taxi qualification tests and traffic safety manager qualification tests.

Experience-oriented Safe Driving Education for Transportation Workers

At the Transportation Safety Training Center (two locations in Hwaseong and Sangju), we operate a hands-on training program for transportation workers to experience traffic safety in a situation similar to the actual road. In addition, we are implementing various traffic safety education, such as customized education for children and the elderly, and new and maintenance education for traffic safety officers at transportation companies.

Integrated Management System for Transportation Safety of Hazardous Materials

We operate an integrated safety management system for transporting hazardous materials to prevent accidents on vehicles transporting dangerous substances that can cause large-scale damage and respond quickly and accurately when an actual accident occurs. The hazardous material transporter should submit a transport plan in advance to the system, and the hazardous material transport safety management center monitors the entire process of transporting hazardous materials in real time, minimizing secondary damage by disseminating accident information to related organizations such as the Fire Department and the National Police Agency in the event of an accident.



Nationwide Transportation Safety Operations

Construction of Eco-friendly Environment for Pedestrians and the Mobility Impaired

We create an environment where pedestrians and the mobility impaired who make up one-third of the country's population (the elderly, people with disability, children, accompanying infants, etc.) can move conveniently and safely. We lower the speed limit on urban roads to save the lives of pedestrians, who account for about 40% of traffic fatalities. In order to guarantee the mobility rights of the mobility impaired, the actual conditions of transportation, passenger facilities, and pedestrian environments in the fields of road, rail, aviation, and maritime are investigated and provided as basic data for facility improvement to transportation administrative agencies.

Safety Management of Pedestrians Blind Spot

In order to improve the traffic safety of the roads in apartment complexes, which is a traffic safety blind spot, we conduct a traffic safety inspection of the roads in complexes jointly with local governments, residents, and management office staff. In addition, for the traffic safety of children commuting to school, we conduct a traffic safety inspection on the elementary school road.

Transportation Culture Index Survey and Utilization

Every year, we publish the Transportation Culture Index, which surveys, analyzes, and evaluates the level of transportation culture for 229 local governments across the country. The Traffic Culture Index is used as basic data to induce autonomous competition for traffic safety among local governments and improve traffic safety by local governments. Using the Traffic Culture Index results, we select 4 local governments out of the bottom 20% for the past 3 years to check accident-prone sections, and contribute to the reduction of traffic accidents by suggesting customized improvement plans including design drawings.

Support for Traffic Accident Victims and Their Families

We provide financial and emotional support to solve problems such as difficulties in livelihood and school dropouts for victims of automobile traffic accidents and their families. By identifying the needs of each family, we operate visiting care services provide meals and supplies, accompany them to outings, etc., and improve their quality of lives through psychological counseling and camps. In addition, we provide mentoring services to help children from affected families grow into healthy members of society.



||. CAR SAFETY MANAGEMENT

A detailed management by your reliable safety partner



- Manufactured Vehicle Safety Management
- Automated Vehicle
- Operating Car Safety Management

Manufactured Vehicle Safety Management



Investigation of Manufacturing Defects

In order to reduce the social loss caused by traffic accidents and protect the rights and interests of consumers, we investigate whether the automobile sold by the manufacturer is manufactured in accordance with the safety standards for automobiles and parts; and whether there are manufacturing defects that may interfere with safety. Then, we prompt the manufacturer to implement a recall action.

Exchange & Refund Policy and Operation of Car 365

If a defect with the same cause has been repaired several times within one year (20,000 km) after delivery of the new car and all conditions are met, an exchange or refund is possible through arbitration between the car owner and the manufacturer. In addition, through 'Car 365 (www.car365.go.kr),' a comprehensive automobile information site, we provide information needed by consumers for each life cycle of a car, such as purchasing, operating, servicing, selling, and scrapping a new or used car.

Evaluation of Vehicle Safety

It is an evaluation system that evaluates the safety of newly manufactured cars, provides information to consumers, and prompts manufacturers to produce safer cars. In order to prevent traffic accidents, we carry out safety evaluations in 21 items encompassing three areas of safety: collision safety, pedestrian safety, and accident prevention safety.

Greenhouse Gas Management

As domestic and foreign interest in greenhouse gas reduction is increasing, we manage greenhouse gas in the transportation sector by estimating and analyzing greenhouse gas emissions in the transportation sector for greenhouse gas management, manage companies emitting greenhouse gas above a certain scale (operating greenhouse gas/energy target management system in the transportation sector), and develop greenhouse gas emission coefficients to ensure sustainability. This is used to establish and evaluate transportation and logistics policies.



Automated Vehicle

Commercialization of Automated Vehicles

To ensure the rapid commercialization and safety of autonomous vehicles, the technology levels are classified from level 0 to level 5, and K-City, an autonomous driving experimental city within the Korea Automobile Testing & Research Institute in Hwaseong, was established. Starting with the implementation of the level 3 autonomous vehicle safety standards in 2020, we are implementing the future-oriented goal of autonomous vehicles by preparing safety standards for each technology level so that higher levels of autonomous driving technology can be realized.

Future Car Safety Regulation & Research

Following the enactment of safety regulations for partially autonomous vehicles (level 3), we research ways to secure the safety necessary for commercialization of fully autonomous vehicles (level 4). We prepare safety regulation for various fields such as driving and operation, and participate in UN Regulation's enactment of regulations to secure safe automated vehicles.

Automated Vehicle Data Sharing

By establishing a platform for collecting automated vehicle data, we collect and process data for autonomous driving (video, 2D, 3D, etc.) using FHD cameras, lidars, and radar sensors, and share them with data sharing consulting bodies to support technological development in Korea for commercializing automated vehicles.



Operating Car Safety Management



Vehicle Inspection

Vehicle inspection is an important work that protects people's precious lives and property by preventing traffic accidents and protecting the environment. We are operating 59 TS inspection centers nationwide with inspection guide and reservation accessible through a mobile phone. For the convenience of inspections in islands and mountainous regions, we also operate the inspection call service.

Advanced Vehicle Inspection

In order to secure driving safety for advanced vehicles, we opened the Korea Advanced Vehicle Inspection R&D Center (KAVIC) in 2020 and conduct inspection and research on advanced vehicles, such as electric vehicle safety management, hydrogen and electric vehicles' safety management, and advanced vehicles' cutting-edge safety equipment and inspection technology development.

Approval of Vehicle Tuning

We pre-inspect the safety of vehicles to be tuned and protect the lives of citizens. Everything related to tuning approval and application are easily accessible through the Cyber Inspection Center (www.cyberts.kr).

Special Inspection for Other Means of Transportation

Inspection of High Pressure Containers

We inspect the high-pressure containers, fuel equipment, defects, damages, installation status, gas leakage, and operation status of eco-friendly vehicles that are run by hydrogen and natural gases.

Mechanical Parking Lot Inspection

We conduct safety design review and use, regular, and precise safety inspections to maintain the safety and performance of the mechanical parking lot. We are also doing our best efforts for preventive management by providing training of people in-charge and conducting surveys on accidents.

Ropeway·Track Inspection

We check whether safety is secured for monorails, light railroads, cable cars, ski lifts, etc. and whether they are suitable for operation according to safety standards.

Equipment Quality Inspection

We contribute to securing automobile safety and preventing air pollution by checking the accuracy and performance of machinery, instruments, and environmental measurement devices used for inspection, maintenance, and automobile inspection.





RAIL • AIR TRAFFIC SAFETY MANAGEMENT

Safe and comfortable railroad and aviation



- Rail Traffic Safety Management
- Air Traffic Safety Management

Rail Traffic Safety Management



Rail Safety Information and Worker Qualification Management

As the only specialized institution for rail safety in Korea, we collect and analyze rail safety information such as railroad accident statistics and vehicle history to suggest railroad safety policies and system improvement and take the lead in disseminating knowledge by training railroad safety experts and producing safety promotional materials. In addition, we are actively nurturing railroad safety experts by operating a qualification system such as engineer, controller, and mechanic.

Systematic Rail Safety Management

We pre-approve whether the railway operating organization has an organic system for railroad safety management and conduct regular inspections annually to ensure that the railroad operating organization continuously maintains railroad safety. In addition, we are doing our best to prevent accidents by conducting frequent inspections in the event of a railway accident.

Rail Safety Diagnosis, Integrated Test Operation, and Historical Assessment

We are responsible for all safety aspects from railway design to construction and operation. We remove risk factors in the design stage before railroad construction through safety diagnosis of railroad transportation facilities. We also check the safety and operational readiness of facilities before the opening of newly constructed routes through integrated railroad test operation. In addition, we secure the safety and convenience of users through railway station evaluation.



Air Traffic Safety Management

Precautionary Aviation Safety Management

We operate the aviation safety voluntary report and aviation security voluntary report system to eliminate latent risk factors for aviation safety and security in advance. In addition, we periodically inspect the operation and damage of the aviation obstacle indicator for recognizing obstacles in aviation operation, such as high-rise buildings, to pilots in flight.

Air and Ultra-light Vehicle (ULV) Controllers Qualification Management

We conduct a certification test to secure the expertise of employees in each field responsible for aircraft safety, such as flight pilots, air traffic controllers, flight managers, and aviation mechanics. We also conduct English Proficiency Test of Aviation to verify the English capabilities of aviation workers. In addition, we manage certification tests to secure expertise in ULV controllers such as unmanned aerial vehicles and promote safe operation.

Comprehensive Safety Management System for Drones

In preparation for the commercialization of drones in urban air mobility (UAM) and traffic logistics, a comprehensive safety management system is established and operated to create a safe operating environment. It is playing the role of a control tower for drone safety by introducing a real-name system for drones such as making it mandatory to report drones over 2 kg, establishing a drone identification system, and preparing standards for operating drones in invisible areas.

Fostering Drone Experts

We inspect the facilities, manpower, and regulations of the institution that wants to train drones professionally, designate it as a specialized educational institution, and execute the education required for instructor registration. In addition, we are promoting the revitalization of the domestic drone industry by nurturing practical pilots in forestry, environment, and surveying through the public sector drone pilot training project.

Creating Safe and Sustainable UAM

In an effort to commercialize UAM by 2025, we carry out diverse initiatives, including enacting relevant laws and regulations, actively supporting government policies, and continuously identifying improvements through policy research and key R&D projects. We also make various efforts to activate and expand the UAM industry. We run and assist UAM Team Korea; build collaborative networks among industry, academia, research institutes, and government agencies; and host UAM Olympiad for university students across the country.



42

SOCIAL
CONTRIBUTION

44

ETHICAL MANAGEMENT
HUMAN RIGHTS
MANAGEMENT

46

ABOUT KOREA
TRANSPORTATION
SAFETY AUTHORITY



YOUR HAPPINESS

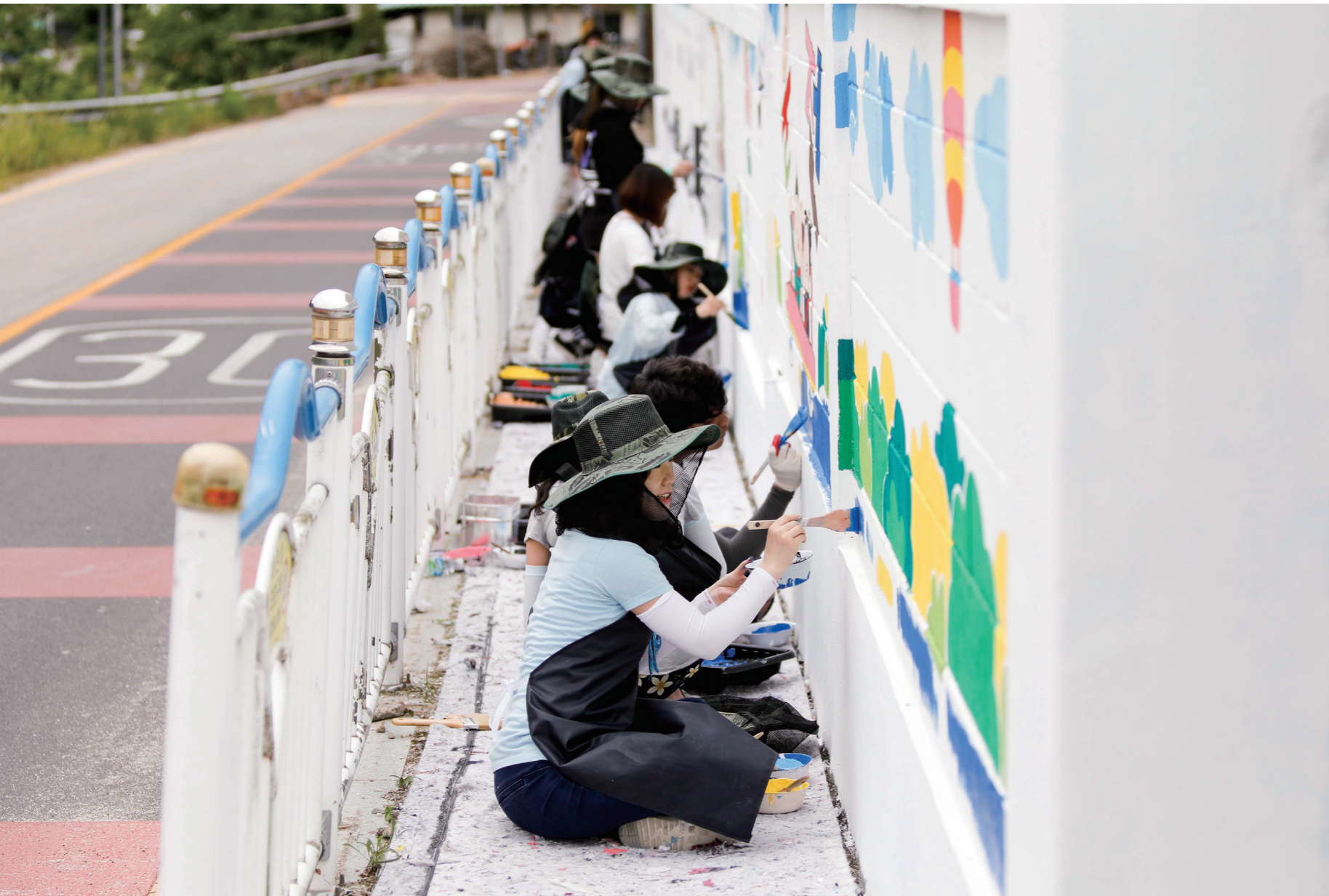
Social Responsibilities of TS

Dreaming of a safe and happy tomorrow, the Korea Transportation Safety Authority creates an opportunity of hope to change the world.

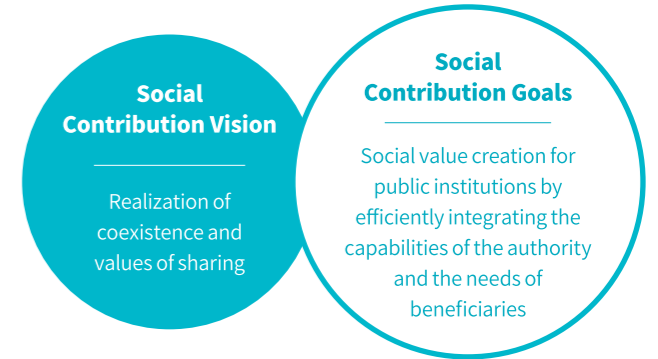
A happy tomorrow is a movement toward better possibilities. The goal is to help the underprivileged realize their dreams and provide opportunities for mutual growth and development to create a society where everyone is happy. In order for today's hope to lead to a better future, the Korea Transportation Safety Authority is constantly moving towards possibilities.

Social Contribution

The Korea Transportation Safety Authority is carrying out various social contribution activities together with the “TS With” volunteer group to foster the value of sharing and caring in order to create a society where all citizens are happy.



“TS With” is a social contribution volunteer group of the Korea Transportation Safety Authority that strives to realize the joyful meaning of value of sharing that makes all of us smile.



Social contribution activities in 2022 (Jan. 1 – Dec. 31, 2022)

Traffic Safety Operations

Supply of rear reflectors for automobiles and agricultural machinery **57,850**

Supply of safety products (car seats) for low-income children **1,200**

Supply of canes for the elderly **14,000**

Supply of helmets and vests for two-wheeled vehicles **8,000**

Operation of Vehicle Culture University 

Military driver's driving aptitude test **20,338**

Vehicle Inspection Operations

Reduction of fee for car inspection for the socially disadvantaged **KRW 3,234 million**

Free car inspection and replacement of consumables **KRW 146 million**

39 cases (93 days) of inspection car services **1,223**

Support for Traffic Accident Victims and Their Families

Children's mentoring service	Visiting care service
Psychological stability support service	Improvement project for residential areas
Experience and tour of the national future industry for children	Support for childbirth and funeral supplies for affected families

Coexistence and Cooperation (Others)

Social contribution activities with the CEO	Support for One-Company, One-Village sisterhood relationship
Support for the underprivileged in the local community, etc.	Purchase of local agricultural products and operation of a market for direct sales of agricultural products
Purchase of local products	Korea Foundation for Cooperation of Rural Affairs
Consolation money for military personnel	Nature conservation (purification) activities

Ethical Management and Human Rights Management

The Korea Transportation Safety Authority is prioritizing fair, transparent and socially responsible management to create a happy and warm world without alienation and discrimination.



Preventive Measures for Ethical Risks



- Establishment and operation of an internal control system
- Regular monitoring of ethical risks
- Reinforcement of internal accounting controls
- Reinforcement of ongoing and routine audits
- Operation of a conflict of interest prevention system

Enhancement of Institutional Transparency



- Operation of an open organization through the board of directors
- Ensuring transparent recruitment with minimized human error
- Operation of a special audit team for budget execution
- Ensuring transparent contract management utilizing the online ordering system
- Disclosure of information and open data with a focus on consumers

Spreading a Culture of Ethics and Integrity



- Engaging in active communication with the public
- Reinforcement of ethics and integrity education for all employees
- Fostering a culture of integrity through community engagement
- Operation of an anonymous reporting channel

Implementation of People-oriented Human Rights Management



- Conducting annual human rights impact assessments
- Operation of a human rights counseling center
- Development of guidelines for relief procedures for human rights violations
- Identifying and addressing blind spots in human rights within the organization
- Carrying out initiatives to promote a culture that emphasizes the importance of respecting human rights outside the organization

Location of the Korea Transportation Safety Authority

Branch	Address	Phone
Seoul	220, World Cup-ro, Mapo-gu, Seoul *Detailed Driving Inspection and National Qualification Test: 41, Gongneung-ro 62-gil, Nowon-gu, Seoul *National Qualification Test: 113 Gyeongin-ro, Guro-gu, Seoul	+82-2-375-1273 +82-2-973-0586 +82-2-372-5347
Gyeonggi Nambu	24, Suin-ro, Gwonseon-gu, Suwon-si, Gyeonggi-do	+82-31-297-5000
Daejeon, Sejong, Chungnam	31, Daedeok-daero 1417beon-gil, Daedeok-gu, Daejeon	+82-42-933-4324
Daegu, Gyeongbuk	33, Nobyeon-ro, Suseong-gu, Daegu	+82-53-794-3812
Busan	256, Hakjang-ro, Sasang-gu, Busan	+82-51-315-1421
Gwangju, Jeonnam	96, Songam-ro, Nam-gu, Gwangju	+82-62-606-7600
Gyeonggi Bukbu	285, Pyeonghwa-ro, Uijeongbu-si, Gyeonggi-do	+82-31-837-0700
Incheon	3F, 357, Baekbeom-ro, Namdong-gu, Incheon	+82-32-833-5000
Gangwon	10, Dongnae-ro, Chuncheon-si, Gangwon-do	+82-33-240-0100
Chungbuk	21, Saun-ro 386beon-gil, Heungdeok-gu, Cheongju-si, Chungcheongbuk-do	+82-43-269-5000
Jeonbuk	44, Sinhaeng-ro, Deokjin-gu, Jeonju-si, Jeollabuk-do	+82-63-212-4740
Gyeongnam	2F, 44, Charyong-ro 48beon-gil, Uichang-gu, Changwon-si, Gyeongsangnam-do	+82-55-270-0500
Ulsan	7F, 90-1, Beonyeong-ro, Nam-gu, Ulsan	+82-52-256-9373
Jeju	79, Sambong-ro, Jeju-si, Jeju-do	+82-64-723-3111

Inspection Center of High Pressure Cylinders	Address	Phone	
Seoul Gyeonggi Gangwon	Seongsan Sangam	220, World Cup-ro, Mapo-gu, Seoul +82-2-373-3161 15, Guryong-gil, Mapo-gu, Seoul +82-2-375-3161	
	Nowon Yangju	41, Gongneung-ro 62-gil, Nowon-gu, Seoul +82-2-971-3161 117-16, Hwahap-ro 1710beon-gil, Yangju-si, Gyeonggi-do	
	Gangdong Wonju Donghae	426, Arisu-ro, Gangdong-gu, Seoul +82-2-3426-3161 255, Haenggu-ro, Wonju-si, Gangwon-do 4772, Gangwonnambu-ro, Donghae-si, Gangwon-do	
	Gyeonggi	Seo Suwon Seongnam Siheung	24, Suin-ro, Gwonseon-gu, Suwon-si, Gyeonggi-do +82-31-293-3161 233, Sunhwan-ro, Jungwon-gu, Seongnam-si, Gyeonggi-do 260, Siheung-daero, Siheung-si, Gyeonggi-do
		Incheon	81, Aam-daero 253beon-gil, Michuhol-gu, Incheon +82-32-833-3161 36, Anaji-ro, Gyeyang-gu, Incheon +82-32-548-3161 2600, Gimpo-daero Wolgot-myeon, Gimpo-si, Gyeonggi-do
Daegu, Gyeongbuk	Suseong Pohang Gyeongju	33, Nobyeon-ro, Suseong-gu, Daegu +82-53-791-3161 34, Seoman-ro 45beon-gil, Nam-gu, Pohang-si, Gyeongsangbuk-do 68, Chungbyeon-ro, Gyeongju-si, Gyeongsangbuk-do	
Daejeon Sejong Chungnam	Sintanjin Cheonan Cheongju-si	31, Daedeok-daero 1417beon-gil, Daedeok-gu, Daejeon +82-42-935-3161 909-15, Eumbong-ro, Seobuk-gu, Cheonan-si, Chungcheongnam-do 28, Saun-ro 396beon-gil, Heungdeok-gu, Cheongju-si, Chungcheongbuk-do	
Gwangju, Jeonnam	Gwangju Mokpo Suncheon Yeosu	96, Songam-ro, Nam-gu, Gwangju +82-62-672-3161 172, Samhak-ro, Mokpo-si, Jeollanam-do 491-6, Jungang-ro, Suncheon-si, Jeollanam-do 319, Sinwol-ro, Yeosu-si, Jeollanam-do	
Jeonbuk	Jeonju Iksan	44, Sinhaeng-ro, Deokjin-gu, Jeonju-si, Jeollabuk-do +82-63-212-3161 214, Muwang-ro 2-gil, Iksan-si, Jeollabuk-do	
Busan	Jurye Haeundae	256, Hakjang-ro, Sasang-gu, Busan +82-51-315-3161 201, Centum dong-ro, Haeundae-gu, Busan +82-51-781-3161	
Ulsan	Inspection Center	336, Jungsangongeop-ro, Buk-gu, Ulsan +82-52-287-3161	
Gyeongnam	Changwon Gimhae Jinju	494, Changwon-daero, Uichang-gu, Changwon-si, Gyeongsangnam-do +82-55-237-3161 65-6, Golden root-ro Juchon-myeon, Gimhae-si, Gyeongsangnam-do 834, Dongbu-ro Munsan-eup, Jinju-si, Gyeongsangnam-do	

Mechanical Parking Lot Inspection	Address	Phone
Busan	706, 1-dong, Busan Digital Valley, 303 Daedong-ro, Sasang-gu, Busan	+82-51-329-7951
Daegu Gyeongbuk	203, SNL Medical Tower, 11 Dalgubeol-daero 645-gil, Suseong-gu, Daegu	+82-53-794-3815
Gwangju Jeonnam	401-3 D.Y Building, 91 Mareukmabokgae-ro, Seo-gu, Gwangju	+82-62-385-3261
Daejeon Sejong Chungnam	107 Techno City, 5 Shinildong-ro 17beon-gil, Daedeok-gu, Daejeon	+82-42-933-4327

* The Seoul Mechanical Parking Lot is located on the second floor of the Sangam Inspection Center, and the Gyeonggi Southern Mechanical Parking Lot is located on the second floor of the Suwon Inspection Center

HQ Front Desk +82-54-459-7115 Customer Center +82-1577-0990 17, Hyeoksinsin 6-ro, Gimcheon-si, Gyeongsangbuk-do	Korea Advanced Vehicle Inspection R&D Center Tel +82-54-440-3194 288-7 Hyeoksinsin-ro, Gimcheon-si, Gyeongsangbuk-do	Korea Automobile Testing & Research Institute Tel +82-31-369-1114 200, Samjon-ro Songsan-myeon, Hwaseong-si, Gyeonggi-do
Hwaseong Transportation Safety Experience & Education Center Tel +82-31-8053-9800 200 Samjon-ro, Songsan-myeon, Hwaseong-si, Gyeonggi-do	Sangju Transportation Safety Experience & Education Center Tel +82-54-530-0100 80-15 Magonggongdan-ro, Cheongni-myeon, Sangju-si, Gyeongsangbuk-do	Drone Qualification Test Center Tel +82-31-645-2100 200, Samjon-ro Songsan-myeon, Hwaseong-si, Gyeonggi-do
Drone Education Center Tel +82-31-489-5200 to 5215 40 Haesongsimni-ro, Siheung-si, Gyeonggi-do	Aviation Qualification Test Center Tel +82-2-3151-1500 15, Guryong-gil, Mapo-gu, Seoul	Railroad Test Center Tel +82-31-462-3616 157 Cheoldobangmulgwan-ro, Uiwang-si, Gyeonggi-do
Specialized Vehicle Certification Center Tel +82-63-544-9858 7 Baekgugongdan 1-gil, Baekgu-myeon, Gimje-si, Jeollabuk-do	Vehicle Parts Certification Support Center Tel +82-41-630-7150 27 Cheomdansandan 5-gil, Hongbuk-eup, Hongseong-gun, Chungcheongnam-do	Eco-friendly Vehicle Parts and Certification Center Tel +82-62-970-3369 23 Bitdong 10-ro, Gwangsan-gu, Gwangju

Vehicle Inspection Center		Address	Phone		
Seoul	Gangnam Seongsan Nowon Guro Seongdong Sangam	13, Heolleung-ro 745-gil, Gangnam-gu, Seoul 220, World Cup-ro, Mapo-gu, Seoul 41, Gongneung-ro 62-gil, Nowon-gu, Seoul 113, Gyeongin-ro, Guro-gu, Seoul 117, Garam-gil, Seongdong-gu, Seoul 15, Guryong-gil, Mapo-gu, Seoul	+82-2-459-2844 +82-2-307-9140 +82-2-948-4121 +82-2-2037-6000 +82-2-2244-2556 +82-2-309-7033		
	Gyeonggi, Nambu	Suwon-si Anyang Seongnam Seo Suwon Ansan Yongin Dongtan	240, Sinwon-ro, Yeongtong-gu, Suwon-si, Gyeonggi-do 392, Simin-daero, Dongan-gu, Anyang-si, Gyeonggi-do 8, Sagimakgol-ro 148beon-gil, Jungwon-gu, Seongnam-si, Gyeonggi-do 24, Suin-ro, Gwonseon-gu, Suwon-si, Gyeonggi-do 16, Ansancheonseo-ro 6-gil, Sangnok-gu, Ansan-si, Gyeonggi-do 853, Jungbu-daero, Giheung-gu, Yongin-si, Gyeonggi-do 642-4, Dongtangiheung-ro, Hwaseong-si, Gyeonggi-do	+82-31-211-2414 +82-31-422-4500 +82-31-747-9467 +82-31-293-9339 +82-31-475-5270 +82-31-281-3709 +82-31-378-8731	
		Daejeon, Sejong, Chungnam	Daejeon Sintanjin Sejong Cheonan Hongseong	44, Byeondong-ro, Seo-gu, Daejeon 31, Daedeok-daero 1417beon-gil, Daedeok-gu, Daejeon 29-5 Sejong General Stadium-ro (Daepyeong-dong) 909-15, Eumbong-ro, Seobuk-gu, Cheonan-si, Chungcheongnam-do 1207, Chungseo-ro Hongseong-eup, Hongseong-gun, Chungcheongnam-do	+82-42-523-5095 +82-42-931-8106 +82-44-868-0515 +82-41-552-6905 +82-41-632-5837
			Daegu, Gyeongbuk	Ihyeon Suseong Dalseo Pohang Gyeongju Gumi Andong Yeongju Mungyeong	27, Munhwa-ro, Seo-gu, Daegu 33, Nobyeon-ro, Suseong-gu, Daegu 10, Wolbae-ro 5-gil, Dalseo-gu, Daegu 34, Seoman-ro 45beon-gil, Nam-gu, Pohang-si, Gyeongsangbuk-do 4391, Saneop-ro, Gyeongju-si, Gyeongsangbuk-do 722, Yaeun-ro, Gumi-si, Gyeongsangbuk-do 166-13, Gyeongbuk-daero, Andong-si, Gyeongsangbuk-do 52, Guseong-ro 88beon-gil, Yeongju-si, Gyeongsangbuk-do 81, Yeongsin-ro, Mungyeong-si, Gyeongsangbuk-do
Busan		Haeundae Jurye Saha		201, Centum dong-ro, Haeundae-gu, Busan +82-51-324-5331 256, Hakjang-ro, Sasang-gu, Busan 631, Eulsukdo-daero, Saha-gu, Busan +82-51-204-9536	
Gwangju, Jeonnam	Gwangju Buk Gwangju Mokpo Yeosu Suncheon	96, Songam-ro, Nam-gu, Gwangju 877, Saam-ro, Gwangsan-gu, Gwangju 153, Ogam-ro, Mokpo-si, Jeollanam-do 184-11, Manseong-ro, Yeosu-si, Jeollanam-do 10, Haechon-gil, Suncheon-si, Jeollanam-do		+82-62-606-7650 +82-62-962-0990 +82-61-283-5004 +82-61-653-9893 +82-61-741-5532	
	Gyeonggi Bukbu	Uijeongbu Goyang Namyangju		287, Pyeonghwa-ro, Uijeongbu-si, Gyeonggi-do 141, Seongseok-ro, Ilsandong-gu, Goyang-si, Gyeonggi-do 31-19, Dokjeong-ro 273beon-gil Jingeon-eup, Namyangju-si, Gyeonggi-do	+82-31-871-5000 +82-31-977-3939 +82-31-575-1472
Incheon	Incheon Seo Incheon Bucheon	81, Aam-daero 253beon-gil, Michuhol-gu, Incheon 218, Jungbong-daero, Seo-gu, Incheon 42, Ojeong-ro, Bucheon-si, Gyeonggi-do		+82-32-831-0196 +82-32-579-7811 +82-32-674-5000	
Gangwon	Chuncheon Wonju Gangneung Donghae Taebaek	10, Dongnae-ro, Chuncheon-si, Gangwon-do 255, Haenggu-ro, Wonju-si, Gangwon-do 1952-10, Gyeonggang-ro, Gangneung-si, Gangwon-do 4772, Gangwonnambu-ro, Donghae-si, Gangwon-do 576, Taebaek-ro, Taebaek-si, Gangwon-do	+82-33-262-2255 +82-33-747-1110 +82-33-646-5000 +82-33-521-6303 +82-33-553-8191		
	Chungbuk	Cheongju Chungju	21, Saun-ro 386beon-gil, Heungdeok-gu, Cheongju-si, Chungcheongbuk-do 27, Mokhaengsandan 6-ro, Chungju-si, Chungcheongbuk-do	+82-43-272-1889 +82-43-853-5050	
Jeonbuk	Jeonju Gunsan Iksan Jeongeup Namwon	44, Sinhaeng-ro, Deokjin-gu, Jeonju-si, Jeollabuk-do 292, Oehang-ro, Gunsan-si, Jeollabuk-do 101-7, Seogam-ro 13-gil, Iksan-si, Jeollabuk-do 11, Haepyeongbongnyong-gil, Jeongeup-si, Jeollabuk-do 265-15, Chungjeong-ro, Namwon-si, Jeollabuk-do	+82-63-211-9936 +82-63-467-3508 +82-63-832-0404 +82-63-535-6009 +82-63-625-2803		
Gyeongnam	Gimhae Changwon Jinju Geochang	65-6, Golden root-ro Juchon-myeon, Gimhae-si, Gyeongsangnam-do 65-6, Golden root-ro Juchon-myeon, Gimhae-si, Gyeongsangnam-do 15, Solbat-ro 43beon-gil, Jinju-si, Gyeongsangnam-do 1301, Bamtjae-ro Geochang-eup, Geochang-gun, Gyeongsangnam-do	+82-55-333-5205 +82-55-273-5000 +82-55-752-5755 +82-55-945-1444		
	Ulsan	Ulsan	8, Jangsaengpo-ro, Nam-gu, Ulsan +82-52-269-8598		
Jeju	Jeju	79, Sambong-ro, Jeju-si, Jeju-do +82-64-723-3114			